

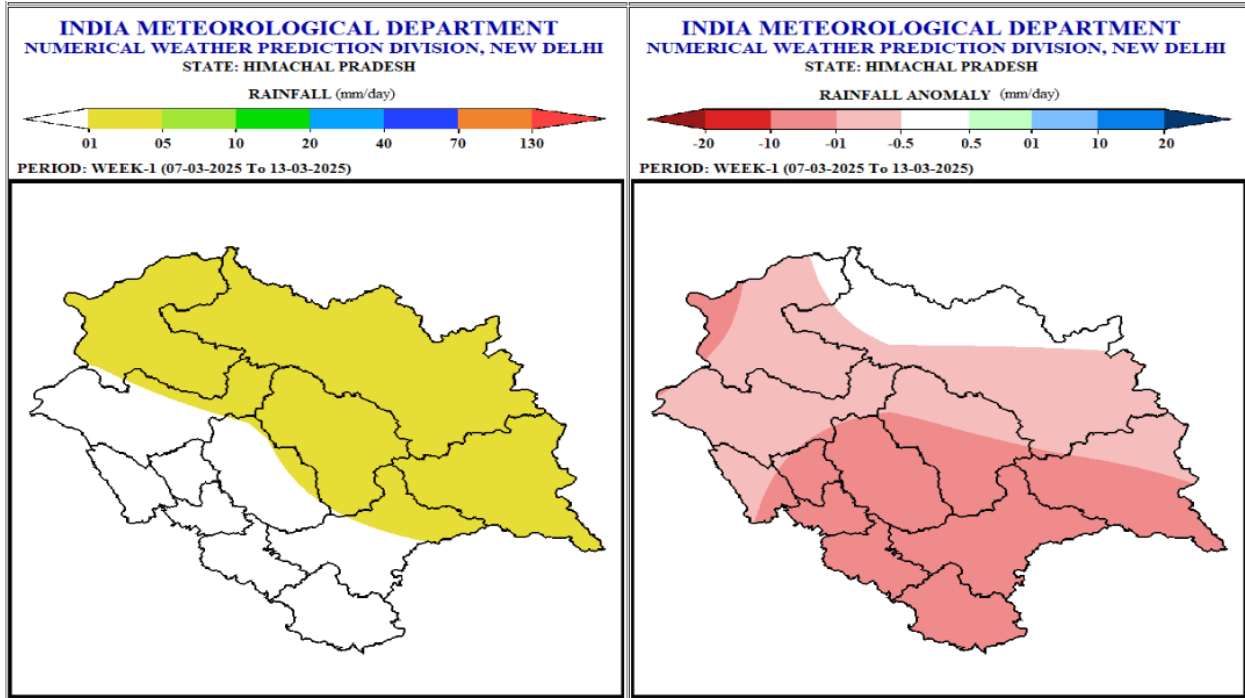
Extended Range Weather Forecast

Date:- 06.03.2025

Weather Forecast and Warning for two weeks w.e.f. 07th March, 2025

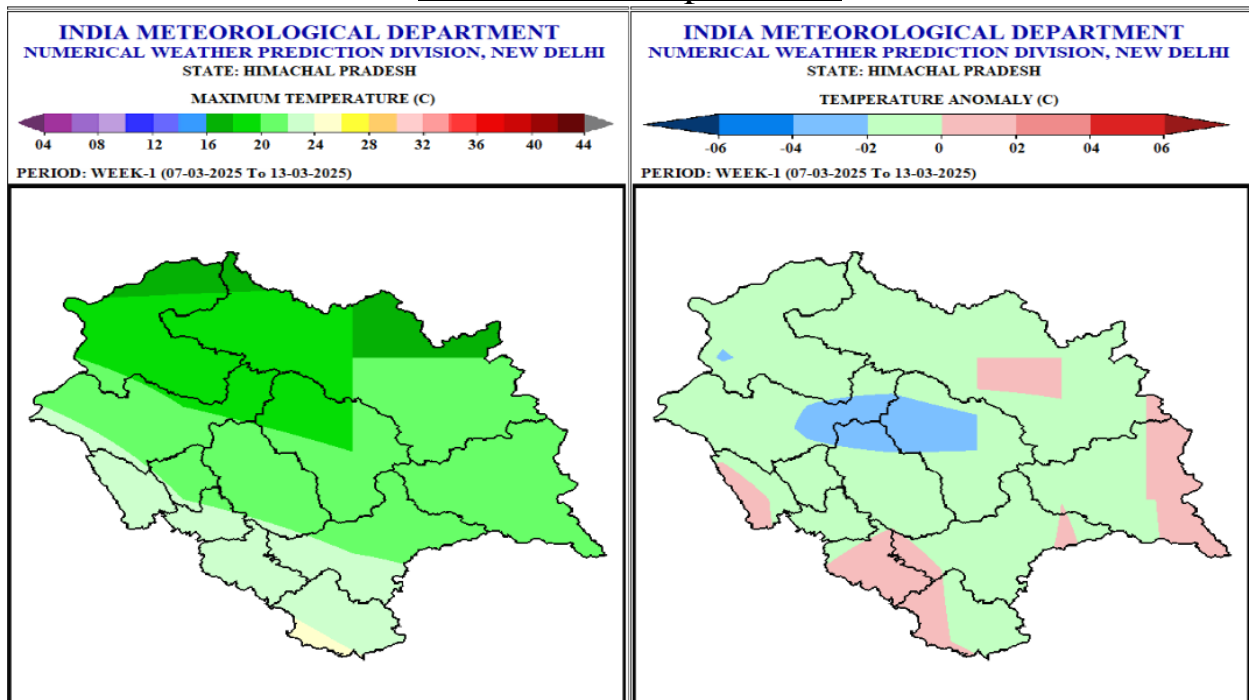
Week 1 (07th March 2025 – 13th March 2025)

Rainfall



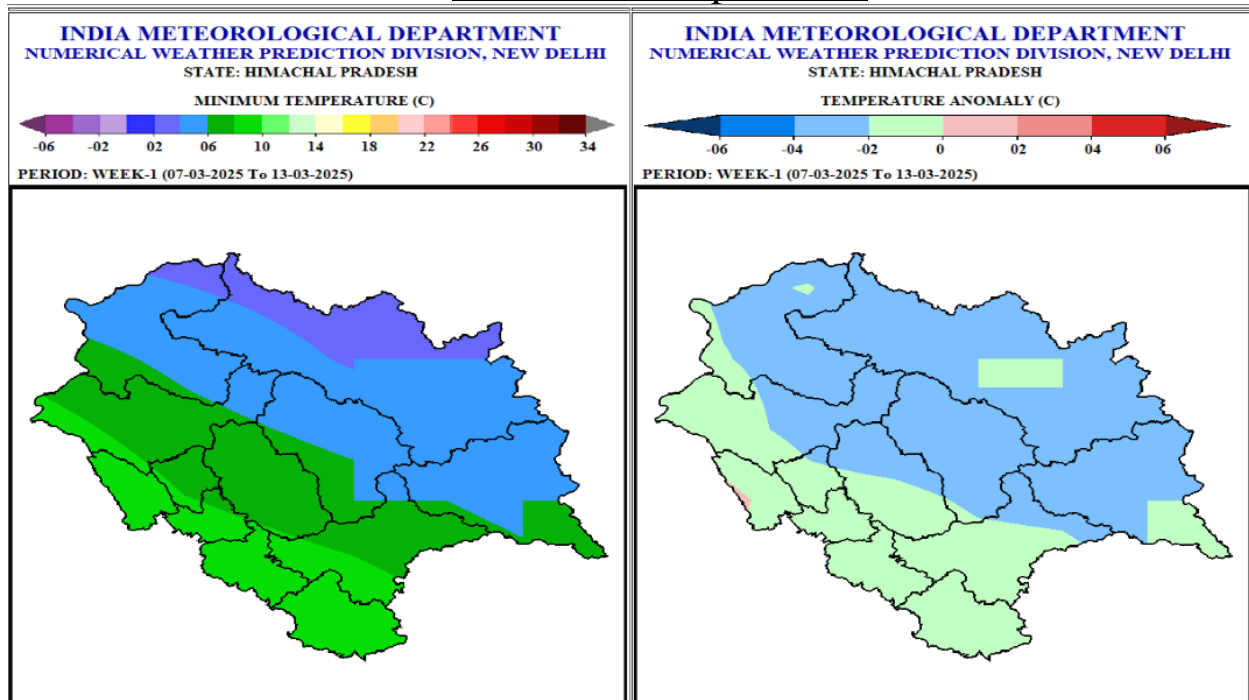
- Light to moderate precipitation likely over high hills & adjoining mid hills and dry weather likely over rest of the state during some days of week 1.
- Rainfall anomaly very likely to be normal over high hills & adjoining mid hills and below normal over rest of the state in the week 1.

Maximum Temperatures



- Maximum Temperatures are very likely to be in the range of 16-20°C over many parts of the high hills except parts of Lahaul-Spiti and Chamba districts where it is likely to be in the range of 12-18°C; in the range of 20-22°C over most parts of mid hills and in the range of 22-26°C over most parts of the lower hills/plains in the week 1.
- Maximum Temperatures very likely to be normal over most parts of the state in the week 1.

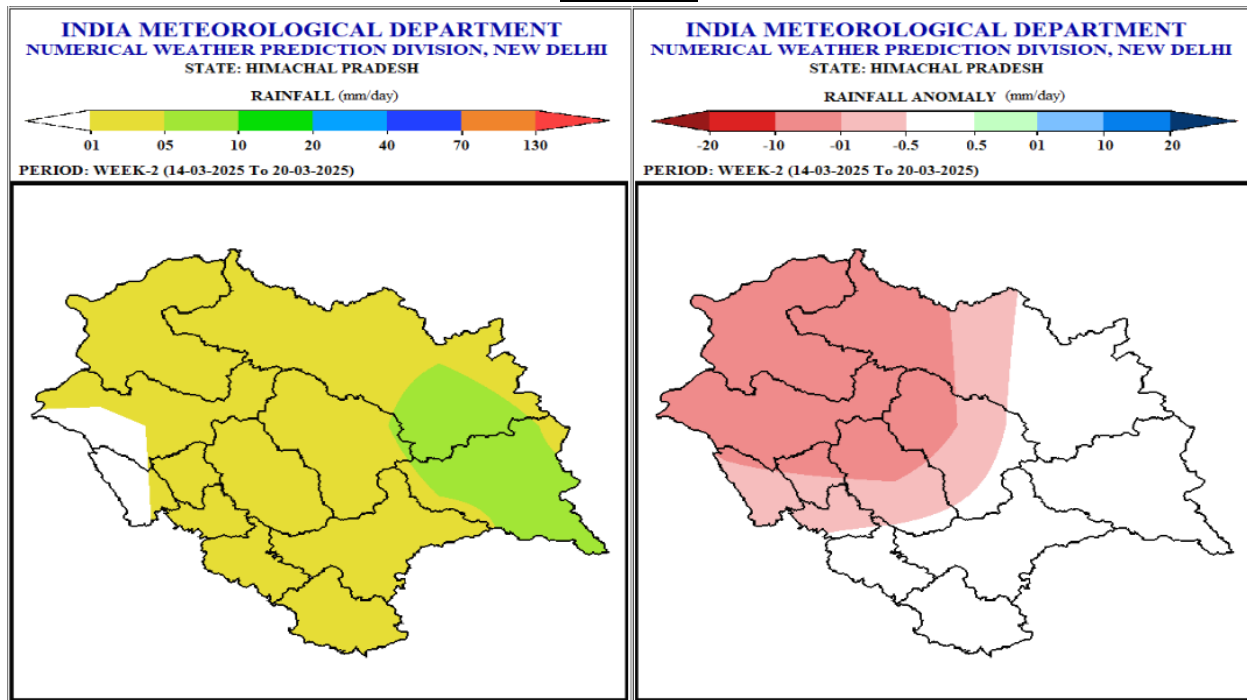
Minimum Temperatures



- Minimum Temperatures are very likely to be in the range of 8-10°C over most parts of lower hills/plains and in the range of 6-8°C over many parts of mid-hills and in the range of 0-4°C over most parts of high hills except over some parts of Chamba and Lahaul-Spiti where it is in the range of -2 to 4°C in the week 1.
- Minimum Temperatures are very likely to be normal over low hills/plain areas and below normal over most high & mid hills of the state in the week 1.

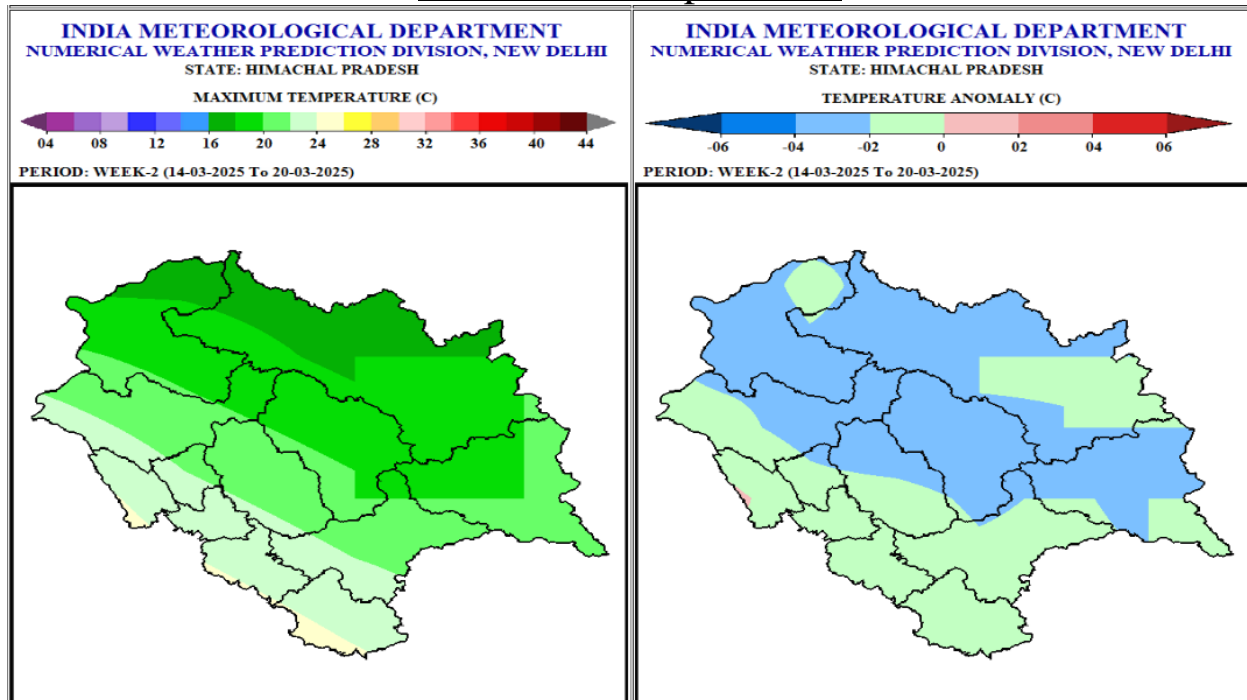
Week 2 (14th March 2025 – 20th March 2025)

Rainfall



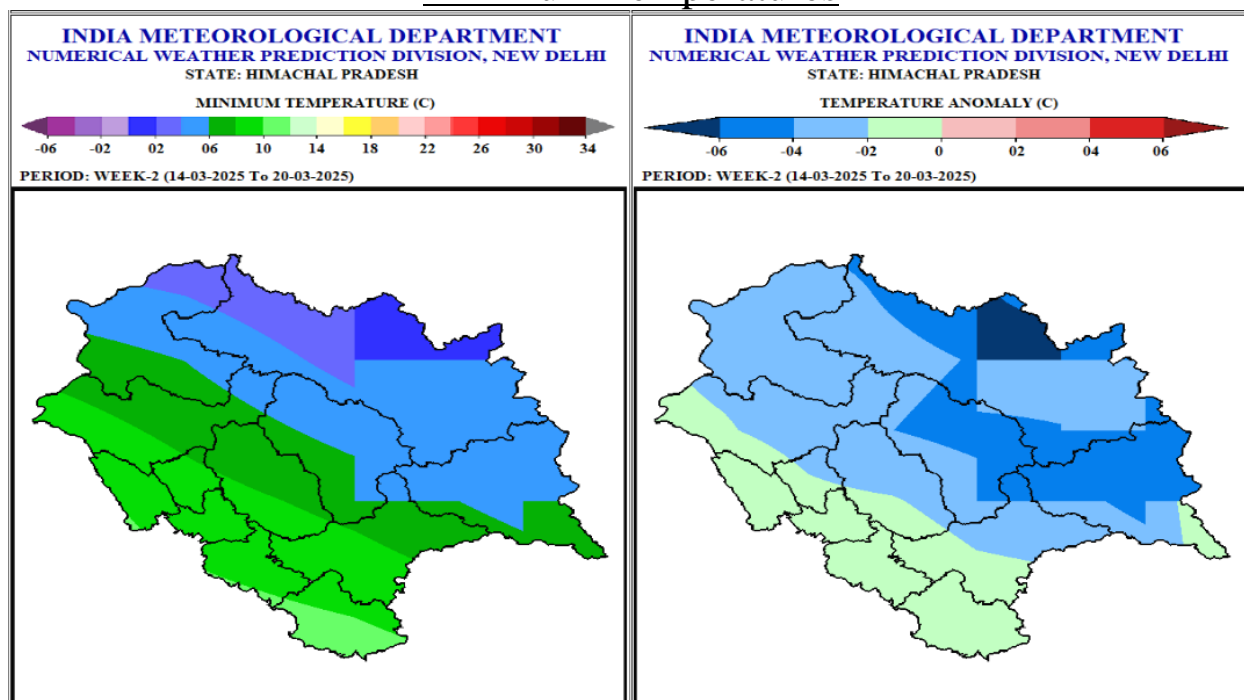
- Light to moderate precipitation likely over most parts of the state during some days of the week 2.
- Rainfall anomaly likely to be normal over many parts of the state except some parts of Lahaul-Spiti, Chamba, Kangra, Kullu and Mandi districts where it is likely to be below normal in the week 2.

Maximum Temperatures



- Maximum Temperatures are likely to be in the range of 12-18°C over most parts of the high hills except some parts of Lahaul-Spiti where it is likely to be in the range of 10-14°C, in the range of 20-24°C over most parts of mid hills and in the range of 22-26°C in the lower hills in the week 2.
- Maximum Temperatures are likely to be normal to below normal over most parts of the state in the week 2.

Minimum Temperatures



- Minimum Temperatures are likely to be in the range of 10-12°C over most parts of lower hills/plains; in the range of 6-10°C over most parts of mid hills & in the range of 2-4°C over many parts of the high hills except some parts of Lahaul- Spiti and Chamba where it is likely to be in the range of -2 to 2°C during many days of the week 2.
- Minimum Temperatures are likely to be normal in low hills/plain areas and below normal in high hills & mid hills of the state in the week 2.

Outlook for next 2 weeks

Week	Max. Temp	Min. Temp.	Rainfall Anomaly
Week 3 21 st March to 28 th March	Normal to Near Normal	<u>High hills:</u> Below Normal <u>Low Hills/Plain areas & Mid hills:</u> Normal	Normal
Week 4 28 th March to 03 rd April	Normal	<u>High hills:</u> Below Normal <u>Low Hills/Plain areas & Mid hills:</u> Normal	Normal

Regards
Met Centre Shimla

For latest Weather Bulletin and warnings kindly visit following links

Website: <https://mausam.imd.gov.in/shimla/>

Facebook: <https://www.facebook.com/profile.php?id=100018411811087>

Twitter: <https://twitter.com/himachalmausam>

IG: www.instagram.com/metcentresml/